

THE ECONOMIC DASHBOARD

OCTOBER 1 – OCTOBER 31, 2022 | BUSINESS INSIGHTS

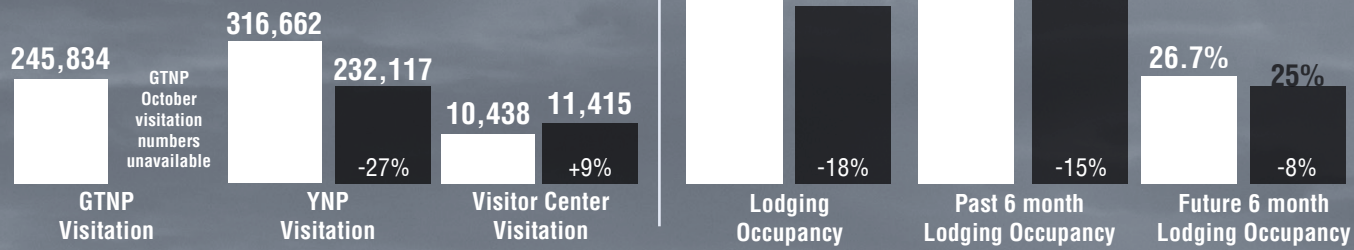
WELCOME NEW CHAMBER MEMBERS:

Basin & Range Kitchen + Bath Remodeling • Harris Media • MIXOLOSHE
Rob Woodson Insurance Services • JH Flower Boutique • Keller Williams Jackson Hole

VISITOR DATA

OCTOBER

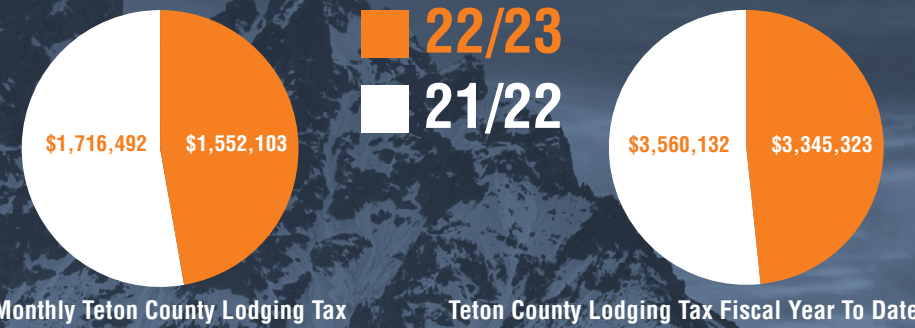
■ 2021 ■ 2022



NO DECEMBER BUSINESS OVER BREAKFAST
Please Remember to Shop Local this Holiday Season

AUGUST LODGING TAX COLLECTION

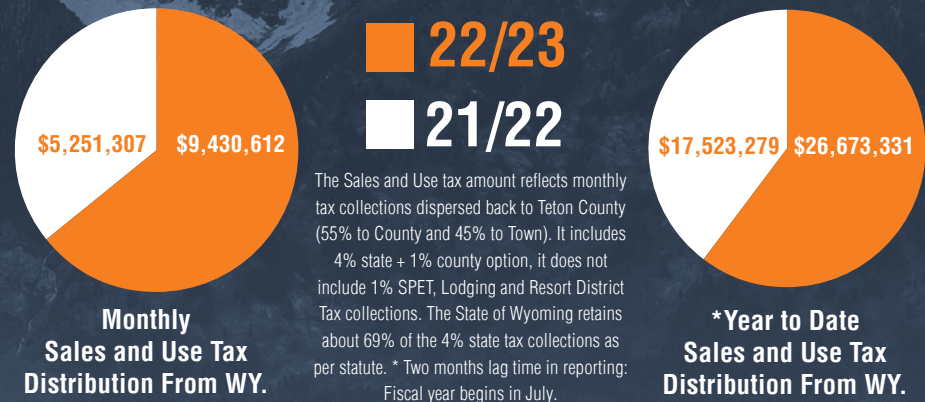
Two month lag time in reporting, fiscal year begins in July



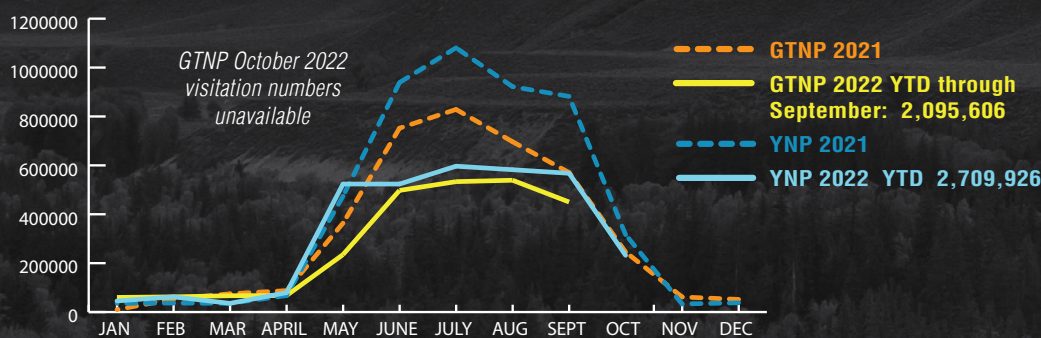
OCTOBER LICENSES AND PERMITS



SEPTEMBER SALES & USE TAX

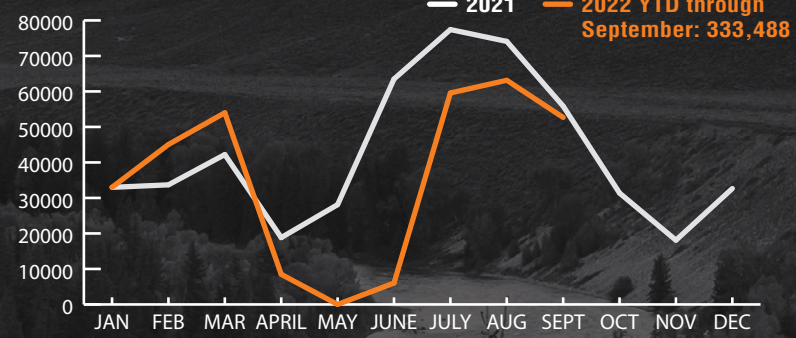


VISITATION NUMBERS



YEAR OVER YEAR DATA

JH AIRPORT STATS (ENPLANEMENTS)



LODGING TAX



SALES AND USE TAX



For more information, send inquiries to kent@jacksonholechamber.com

Data collected from the Jackson Hole Chamber of Commerce • www.jacksonholechamber.com

Sources: Wyoming Dept. of Revenue, Teton County Building Dept MLS and JHRE Associates internal database, Town of Jackson, Jackson Hole Chamber, Jackson Hole Airport, National Park Service