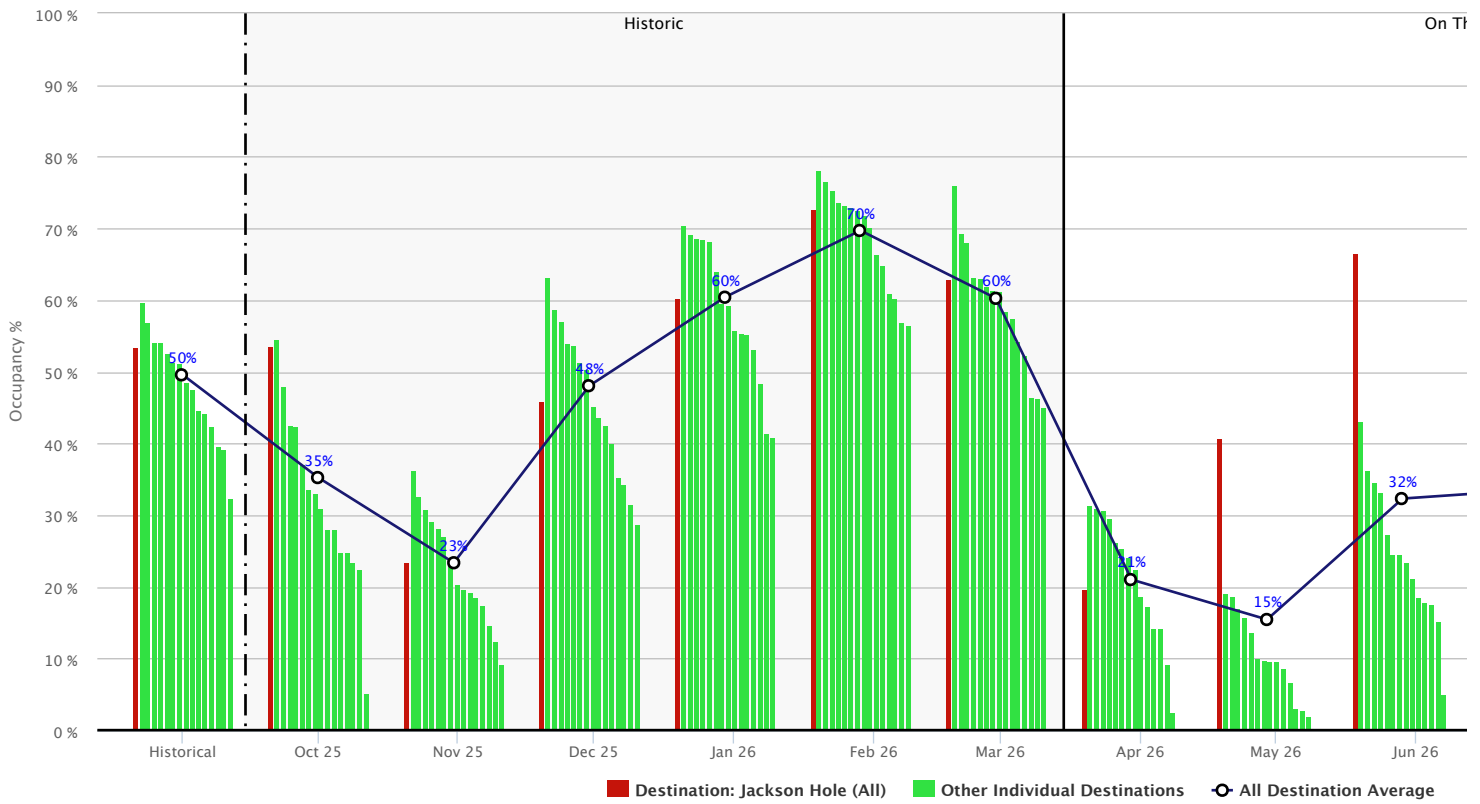


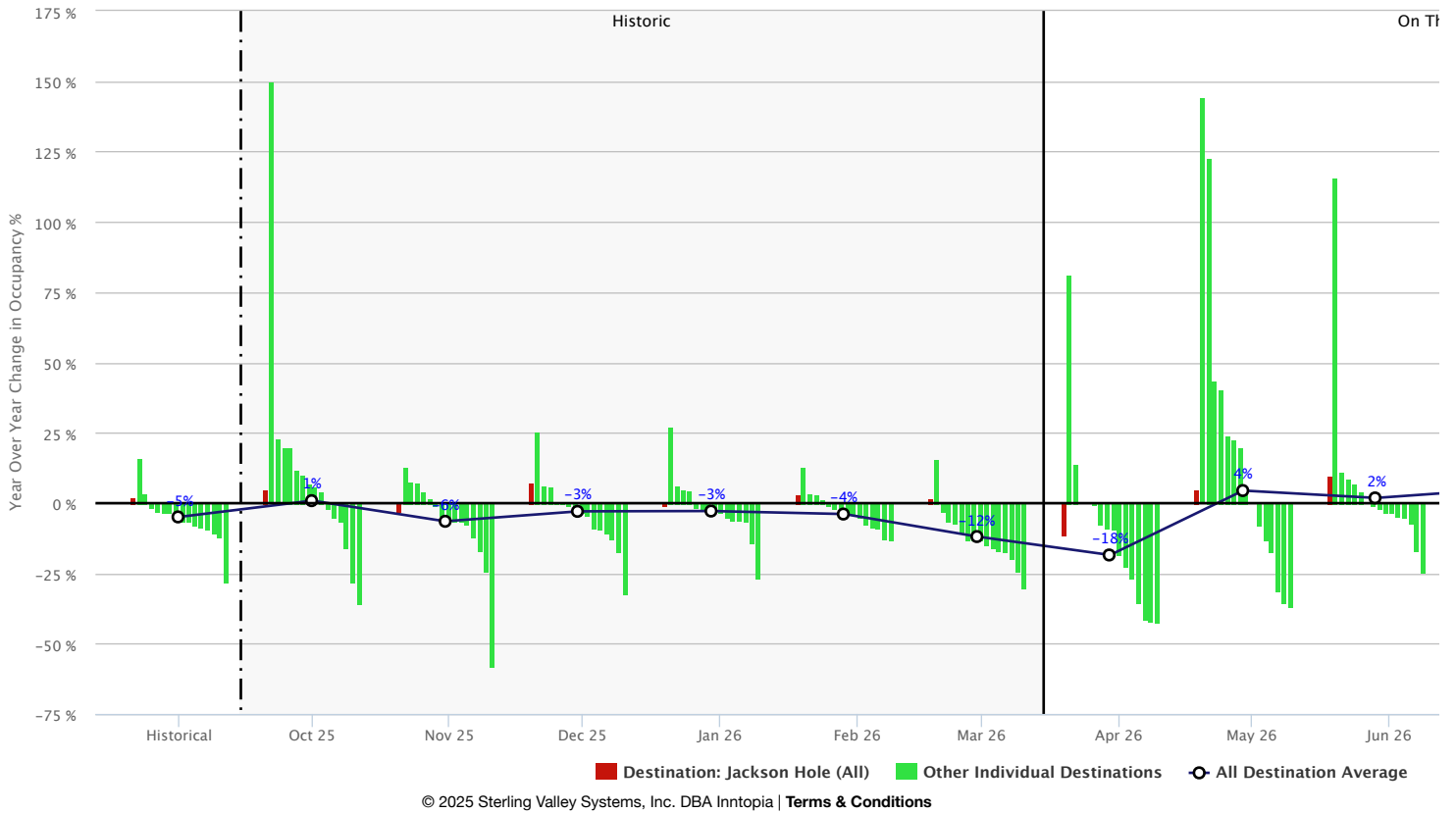
Jackson Hole (All) Occupancy Rate (Most Recent Data) Multi-Destination Comparative Report as of Mar 31, 2026

[Download PDF](#)

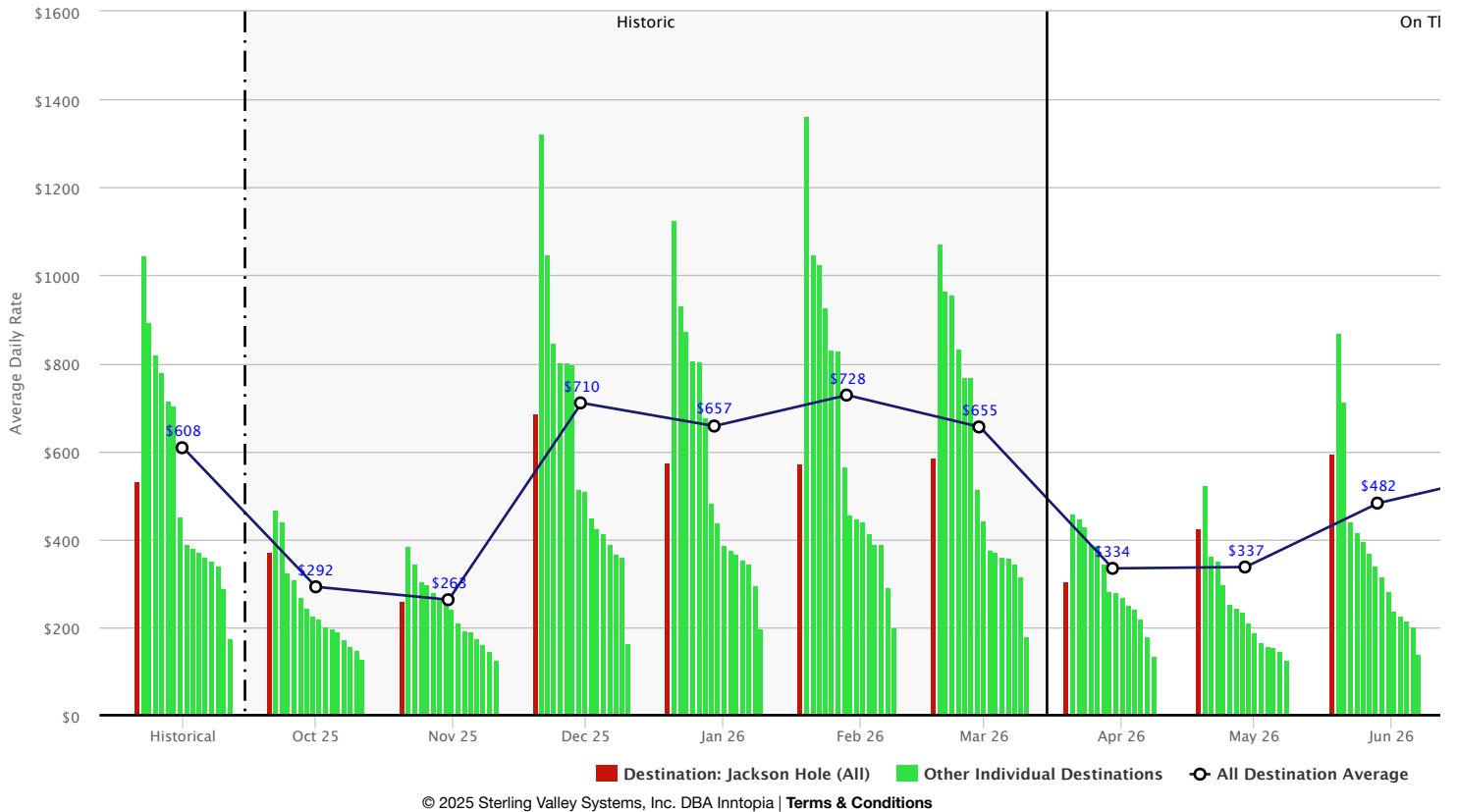


© 2025 Sterling Valley Systems, Inc. DBA Inntopia | [Terms & Conditions](#)

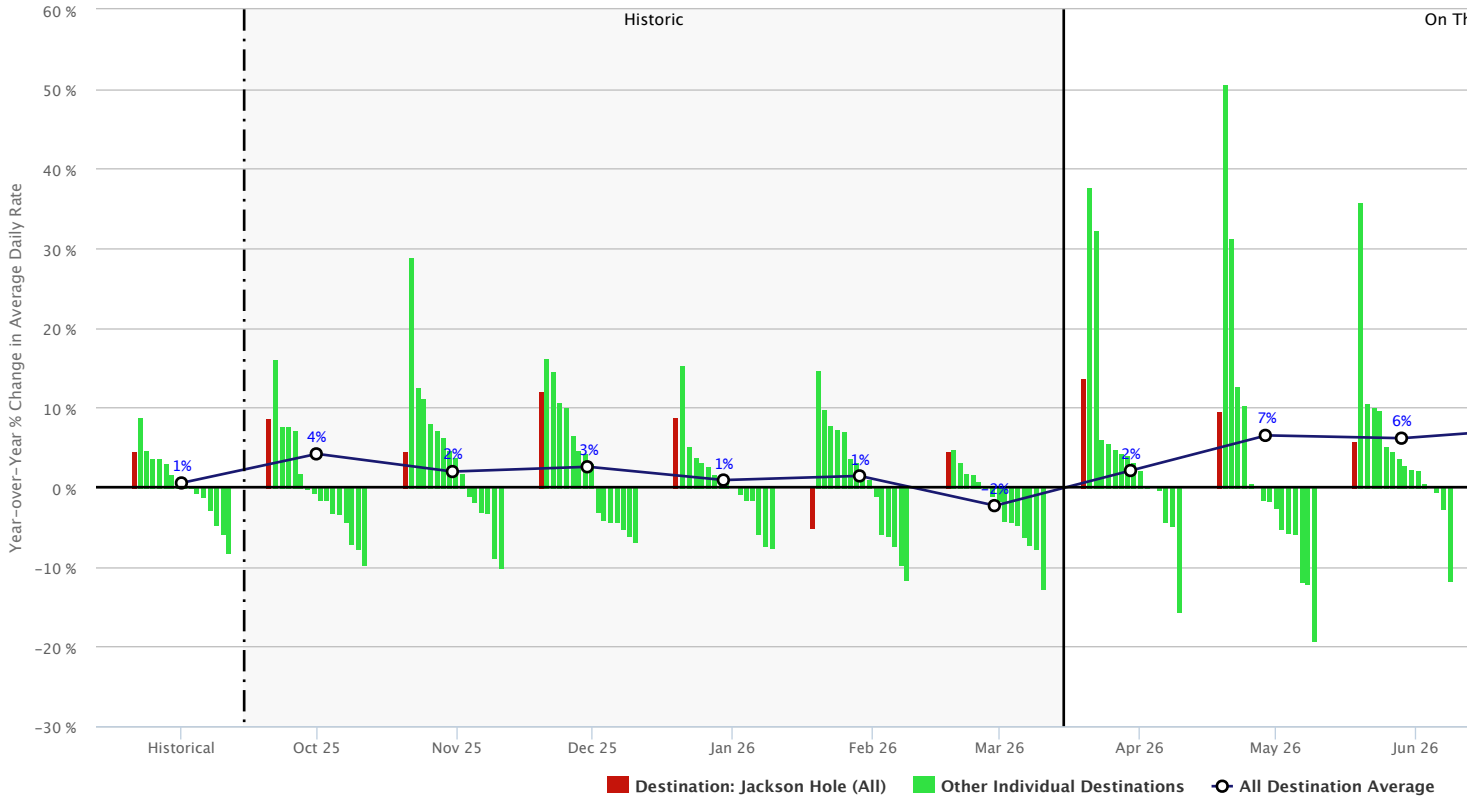
Jackson Hole (All) Year-over-Year % Change in Occupancy (Most Recent Data) Multi-Destination Comparative Report as of Mar 31, 2026



Jackson Hole (All)
Average Daily Rate (Most Recent Data)
 Multi-Destination Comparative Report as of Mar 31, 2026

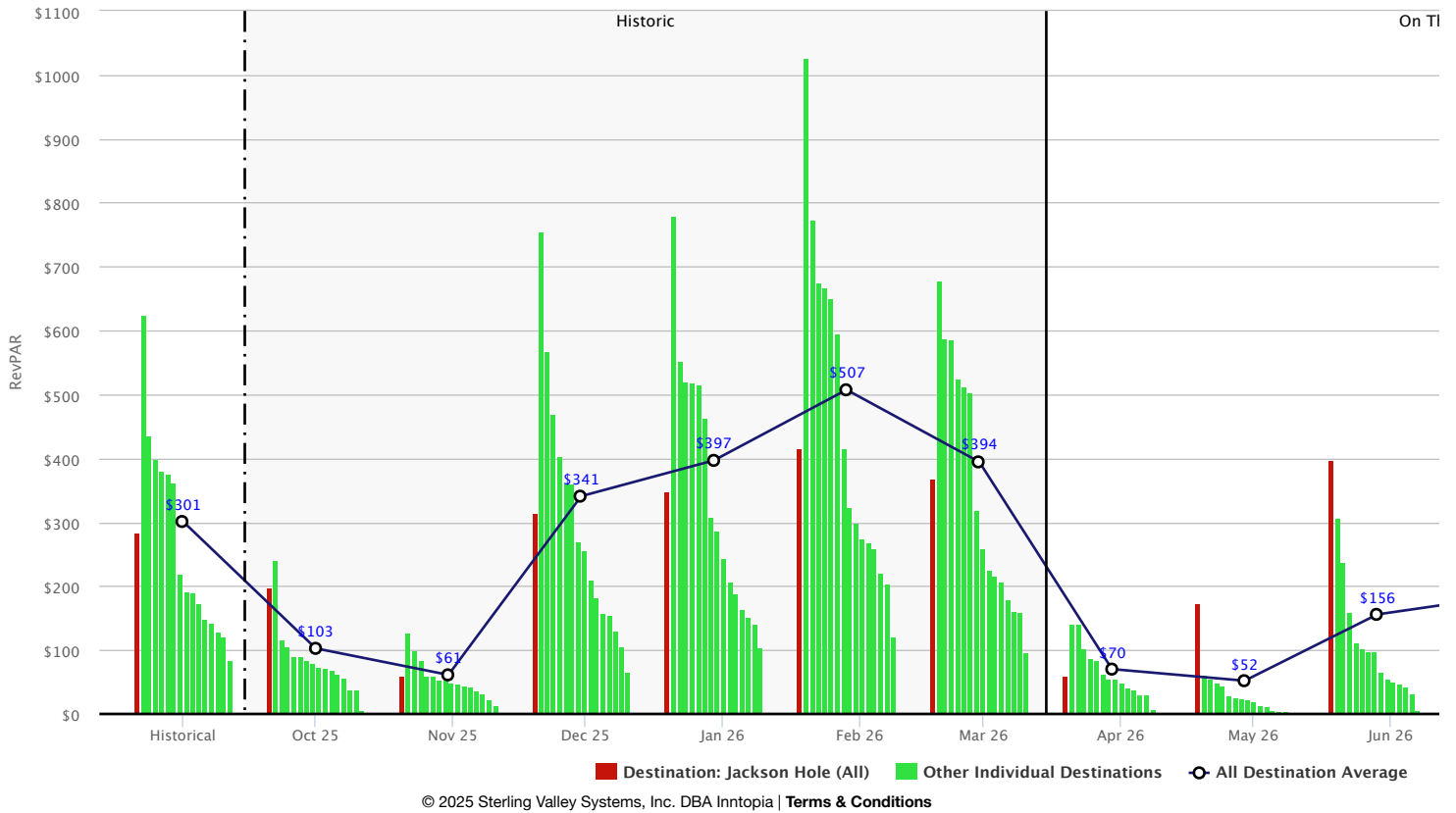


Jackson Hole (All) Year-over-Year % Change in Average Daily Rate (Most Recent Data) Multi-Destination Comparative Report as of Mar 31, 2026



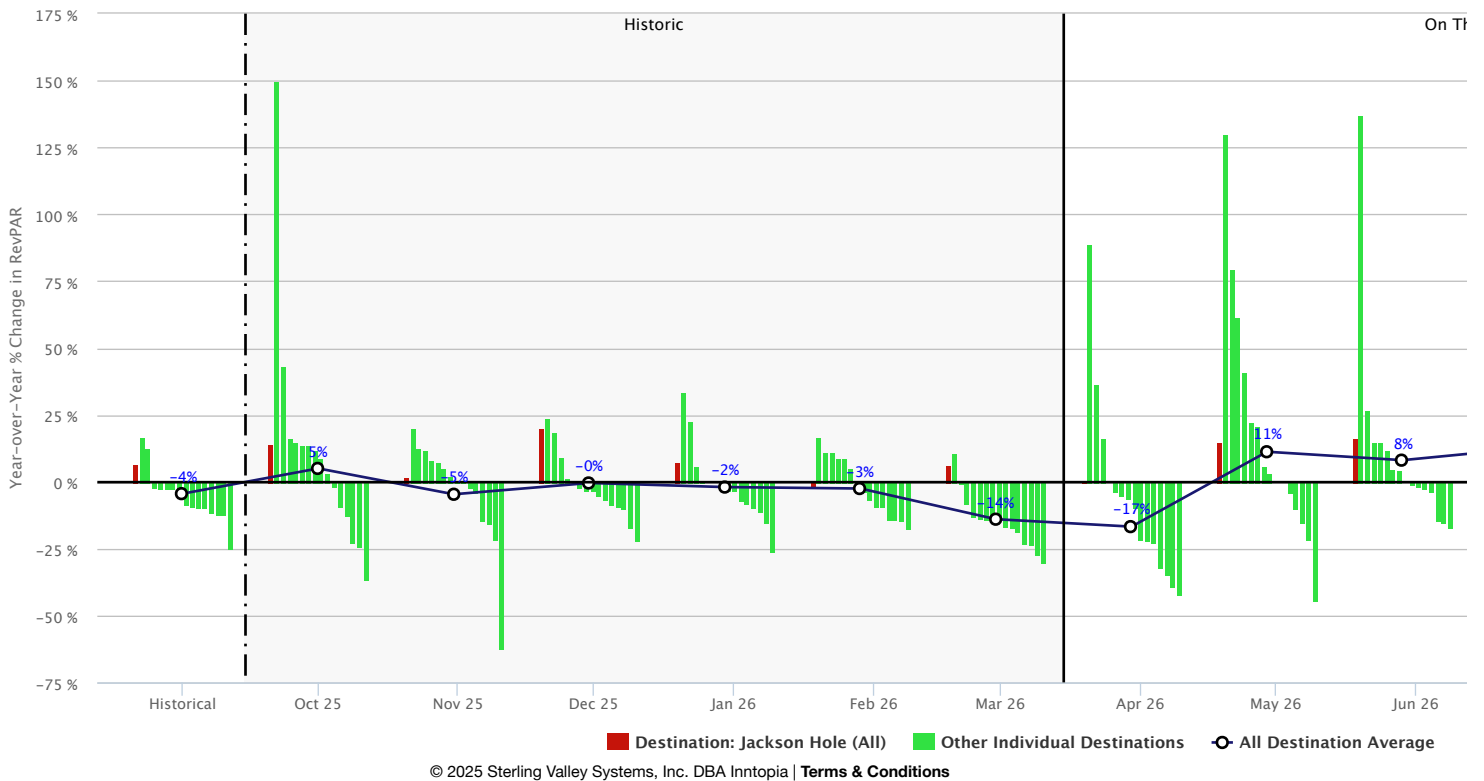
Legend: Destination: Jackson Hole (All) (Red), Other Individual Destinations (Green), All Destination Average (Blue line with circles).
© 2025 Sterling Valley Systems, Inc. DBA Inntopia | Terms & Conditions

Jackson Hole (All) RevPAR (Most Recent Data) Multi-Destination Comparative Report as of Mar 31, 2026



Jackson Hole (All)
Year-over-Year % Change in RevPAR (Most Recent Data)
 Multi-Destination Comparative Report as of Mar 31, 2026

Jackson Hole (All) Year-over-Year % Change in RevPAR





Jackson Hole (All)
Occupancy Rate (Most Recent Data)
 Multi-Destination Comparative Report as of Mar 31, 2026

Occupancy Rate as of Mar 31, 2026																
Month of Occupancy	Jackson Hole (All)	Highest Occupancy	Next Highest Occupancy	Next Highest Occupancy	Next Highest Occupancy	Next Highest Occupancy	Next Highest Occupancy	Next Highest Occupancy	Next Highest Occupancy	Next Highest Occupancy	Next Highest Occupancy	Next Highest Occupancy	Next Highest Occupancy	Next Highest Occupancy	Next Highest Occupancy	Lowest Occupancy
Oct 25	53.6%	54.5%	48.1%	42.6%	42.4%	37.3%	33.8%	33.1%	31.0%	28.2%	28.1%	25.0%	25.0%	23.4%	22.5%	5.3%
Nov 25	23.4%	36.3%	32.8%	31.0%	29.2%	28.3%	27.1%	23.7%	20.4%	19.8%	19.3%	18.5%	17.4%	14.7%	12.4%	9.3%
Dec 25	46.0%	63.3%	58.8%	57.1%	54.1%	53.9%	51.3%	50.5%	45.2%	43.8%	42.6%	40.1%	35.5%	34.5%	31.7%	28.9%
Jan 26	60.4%	70.6%	69.3%	68.7%	68.5%	68.4%	64.1%	59.6%	59.5%	55.8%	55.6%	55.2%	53.3%	48.5%	41.6%	41.0%
Feb 26	72.9%	78.1%	76.7%	75.4%	73.8%	73.3%	72.9%	72.7%	71.9%	70.2%	66.5%	65.1%	61.1%	60.3%	57.0%	56.7%
Mar 26	62.9%	76.2%	69.4%	68.2%	63.3%	63.2%	62.0%	61.5%	61.2%	58.5%	57.5%	54.4%	52.3%	46.5%	46.4%	45.1%
Apr 26	19.8%	31.4%	31.1%	30.7%	29.5%	26.2%	25.6%	24.2%	22.5%	18.7%	17.3%	14.4%	14.3%	9.3%	2.6%	0.0%
May 26	40.8%	19.1%	18.8%	17.1%	15.8%	13.8%	10.0%	9.8%	9.7%	9.6%	8.8%	6.8%	3.1%	2.8%	2.1%	0.0%
Jun 26	66.6%	43.1%	36.3%	34.7%	33.4%	27.3%	24.7%	24.6%	23.5%	21.3%	18.7%	17.9%	17.7%	15.2%	5.1%	0.0%
Jul 26	53.7%	43.7%	43.6%	40.8%	37.7%	37.7%	31.4%	25.8%	24.3%	23.7%	22.2%	21.8%	21.1%	18.7%	16.0%	0.0%
Aug 26	46.6%	27.8%	26.5%	26.4%	23.4%	23.2%	22.3%	22.0%	21.8%	19.9%	16.4%	14.2%	13.6%	11.7%	6.4%	0.0%
Sep 26	44.8%	24.2%	22.4%	21.7%	21.7%	21.1%	20.6%	19.1%	19.0%	18.1%	16.4%	15.2%	14.9%	6.9%	1.5%	0.0%
Grand Total	50.0%	57.0%	45.7%	40.9%	37.5%	37.4%	37.0%	34.5%	33.8%	33.5%	33.4%	32.3%	31.7%	30.1%	29.1%	20.9%
Historical Months Total	53.4%	59.8%	57.0%	54.2%	54.2%	52.8%	51.3%	51.2%	48.7%	47.7%	44.6%	44.2%	42.5%	39.6%	39.4%	32.4%
On the Books Total	47.2%	30.9%	28.6%	26.6%	26.5%	21.7%	21.1%	20.8%	19.7%	17.9%	17.7%	17.5%	14.7%	14.0%	9.5%	0.0%

Base Destination = Jackson Hole (All)

© 2025 Sterling Valley Systems, Inc. DBA Inntopia | Terms & Conditions



Jackson Hole (All)
% Change in Occupancy Rate (Most Recent Data)
 Multi-Destination Comparative Report as of Mar 31, 2026

% Change in Occupancy Rate as of Mar 31, 2026																
Month of Occupancy	Jackson Hole (All)	Highest Pacing	Next Strongest Pacing	Next Strongest Pacing	Next Strongest Pacing	Next Strongest Pacing	Next Strongest Pacing	Next Strongest Pacing	Next Strongest Pacing	Next Strongest Pacing	Next Strongest Pacing	Next Strongest Pacing	Next Strongest Pacing	Next Strongest Pacing	Next Strongest Pacing	Lowest Pacing
Oct 25 vs. Oct 24	5.0%	628.0%	23.3%	20.1%	19.9%	11.8%	10.3%	7.0%	5.8%	4.3%	-1.7%	-5.3%	-6.7%	-15.8%	-28.0%	-36.1%
Nov 25 vs. Nov 24	-2.7%	12.9%	7.9%	7.4%	4.3%	2.0%	-0.8%	-4.2%	-6.1%	-6.6%	-6.6%	-7.4%	-12.1%	-16.9%	-24.4%	-58.4%
Dec 25 vs. Dec 24	7.5%	25.5%	6.3%	6.0%	0.9%	0.8%	-0.9%	-2.4%	-3.4%	-4.4%	-9.1%	-9.4%	-11.0%	-12.4%	-17.4%	-32.1%

Jan 26 vs. Jan 25	-1.2%	27.3%	6.6%	5.0%	4.5%	-1.6%	-1.8%	-2.2%	-2.9%	-3.3%	-5.3%	-5.9%	-6.2%	-6.7%	-14.1%	-26.7%
Feb 26 vs. Feb 25	3.2%	12.9%	3.8%	3.1%	1.5%	-1.0%	-1.7%	-3.1%	-3.5%	-3.7%	-5.1%	-7.3%	-8.2%	-8.7%	-12.5%	-13.1%
Mar 26 vs. Mar 25	1.8%	16.0%	-2.6%	-6.7%	-7.1%	-10.8%	-13.0%	-13.0%	-13.0%	-15.0%	-15.7%	-16.7%	-17.1%	-19.8%	-24.5%	-30.3%
Apr 26 vs. Apr 25	-11.2%	81.3%	13.8%	0.0%	-0.0%	-0.7%	-7.6%	-8.8%	-9.3%	-18.0%	-22.5%	-26.7%	-35.3%	-41.5%	-42.1%	-42.4%
May 26 vs. May 25	4.9%	144.1%	122.8%	43.5%	40.3%	24.3%	22.9%	20.0%	6.0%	0.0%	-7.8%	-13.1%	-17.1%	-31.3%	-35.2%	-36.9%
Jun 26 vs. Jun 25	9.7%	116.1%	11.0%	9.0%	7.0%	4.3%	0.0%	-1.1%	-1.9%	-3.3%	-3.5%	-4.6%	-5.4%	-6.8%	-17.0%	-24.8%
Jul 26 vs. Jul 25	7.9%	100.4%	33.3%	26.7%	20.2%	16.5%	12.7%	6.0%	0.0%	-1.3%	-5.2%	-9.5%	-12.5%	-16.4%	-20.8%	-32.3%
Aug 26 vs. Aug 25	8.8%	42.2%	28.6%	24.0%	14.3%	12.3%	9.6%	6.0%	3.2%	2.6%	0.0%	-11.4%	-12.7%	-13.3%	-14.0%	-28.3%
Sep 26 vs. Sep 25	-1.0%	43.6%	41.3%	30.5%	29.4%	27.6%	19.9%	5.9%	2.9%	1.6%	0.0%	-4.2%	-8.7%	-9.0%	-16.6%	-30.1%
Grand Total	3.7%	15.1%	2.2%	-0.5%	-2.2%	-3.1%	-3.4%	-4.8%	-5.1%	-5.6%	-6.1%	-6.5%	-8.2%	-9.0%	-12.9%	-21.5%
Historical Months Total	2.2%	16.1%	3.7%	-1.4%	-2.9%	-3.1%	-3.2%	-4.5%	-6.4%	-6.8%	-8.0%	-8.6%	-9.6%	-10.6%	-12.4%	-27.9%
On the Books Total	5.4%	16.1%	14.1%	14.1%	8.6%	5.8%	3.6%	2.4%	1.4%	0.0%	-1.5%	-5.7%	-9.0%	-11.8%	-13.5%	-21.3%
Base Destination = Jackson Hole (All)																

© 2025 Sterling Valley Systems, Inc. DBA Inntopia | Terms & Conditions



Jackson Hole (All)
Average Daily Rate (Most Recent Data)
 Multi-Destination Comparative Report as of Mar 31, 2026

Average Daily Rate as of Mar 31, 2026																	
Months Compared	Jackson Hole (All)	Multi-Destination															
		Highest ADR	Next Highest ADR	Next Highest ADR	Next Highest ADR	Next Highest ADR	Next Highest ADR	Next Highest ADR	Next Highest ADR	Next Highest ADR	Next Highest ADR	Next Highest ADR	Next Highest ADR	Next Highest ADR	Next Highest ADR	Next Highest ADR	Lowest ADR
Oct 25	\$ 372	\$ 467	\$ 442	\$ 324	\$ 311	\$ 267	\$ 243	\$ 228	\$ 222	\$ 204	\$ 197	\$ 192	\$ 173	\$ 157	\$ 150	\$ 127	\$ 2
Nov 25	\$ 258	\$ 385	\$ 345	\$ 303	\$ 297	\$ 280	\$ 266	\$ 264	\$ 242	\$ 211	\$ 194	\$ 190	\$ 175	\$ 161	\$ 146	\$ 126	\$ 2
Dec 25	\$ 685	\$ 1,324	\$ 1,048	\$ 848	\$ 800	\$ 800	\$ 799	\$ 515	\$ 508	\$ 451	\$ 427	\$ 414	\$ 391	\$ 365	\$ 360	\$ 164	\$ 7
Jan 26	\$ 576	\$ 1,128	\$ 932	\$ 873	\$ 806	\$ 806	\$ 675	\$ 482	\$ 439	\$ 388	\$ 374	\$ 366	\$ 356	\$ 345	\$ 296	\$ 196	\$ 6
Feb 26	\$ 571	\$ 1,361	\$ 1,049	\$ 1,025	\$ 928	\$ 833	\$ 828	\$ 567	\$ 456	\$ 446	\$ 440	\$ 413	\$ 390	\$ 389	\$ 292	\$ 200	\$ 7
Mar 26	\$ 586	\$ 1,074	\$ 964	\$ 956	\$ 835	\$ 770	\$ 769	\$ 517	\$ 444	\$ 375	\$ 372	\$ 359	\$ 358	\$ 346	\$ 315	\$ 177	\$ 6
Apr 26	\$ 303	\$ 459	\$ 447	\$ 428	\$ 390	\$ 387	\$ 347	\$ 283	\$ 281	\$ 268	\$ 250	\$ 242	\$ 220	\$ 178	\$ 135	\$ 0	\$ 3
May 26	\$ 426	\$ 525	\$ 364	\$ 353	\$ 297	\$ 253	\$ 246	\$ 234	\$ 210	\$ 189	\$ 167	\$ 159	\$ 154	\$ 147	\$ 126	\$ 0	\$ 3
Jun 26	\$ 595	\$ 869	\$ 713	\$ 442	\$ 417	\$ 396	\$ 369	\$ 339	\$ 315	\$ 285	\$ 238	\$ 226	\$ 213	\$ 202	\$ 141	\$ 0	\$ 4
Jul 26	\$ 678	\$ 908	\$ 890	\$ 606	\$ 516	\$ 474	\$ 418	\$ 414	\$ 392	\$ 387	\$ 266	\$ 248	\$ 240	\$ 202	\$ 174	\$ 0	\$ 5
Aug 26	\$ 651	\$ 882	\$ 841	\$ 577	\$ 481	\$ 465	\$ 391	\$ 385	\$ 385	\$ 354	\$ 256	\$ 231	\$ 227	\$ 207	\$ 116	\$ 0	\$ 5
Sep 26	\$ 553	\$ 569	\$ 512	\$ 392	\$ 392	\$ 385	\$ 366	\$ 357	\$ 337	\$ 319	\$ 231	\$ 223	\$ 187	\$ 171	\$ 139	\$ 0	\$ 4
Grand Total	\$ 557	\$ 937	\$ 758	\$ 714	\$ 699	\$ 698	\$ 596	\$ 409	\$ 390	\$ 381	\$ 377	\$ 331	\$ 325	\$ 310	\$ 271	\$ 225	\$ 5
Historical Months Total	\$ 533	\$ 1,044	\$ 894	\$ 819	\$ 780	\$ 715	\$ 703	\$ 453	\$ 390	\$ 380	\$ 372	\$ 360	\$ 352	\$ 340	\$ 289	\$ 175	\$ 6
On the Books Total	\$ 579	\$ 718	\$ 711	\$ 462	\$ 419	\$ 412	\$ 386	\$ 373	\$ 362	\$ 297	\$ 226	\$ 225	\$ 223	\$ 213	\$ 195	\$ 0	\$ 4
Base Destination = Jackson Hole (All)																	

© 2025 Sterling Valley Systems, Inc. DBA Inntopia | Terms & Conditions

Oct 25	\$ 199	\$ 241	\$ 117	\$ 107	\$ 91	\$ 90	\$ 84	\$ 80	\$ 73	\$ 72	\$ 69	\$ 64	\$ 58	\$ 39	\$ 39	\$ 7	\$ 1
Nov 25	\$ 60	\$ 126	\$ 100	\$ 84	\$ 60	\$ 59	\$ 54	\$ 53	\$ 49	\$ 48	\$ 45	\$ 43	\$ 37	\$ 33	\$ 22	\$ 15	\$ 0
Dec 25	\$ 315	\$ 756	\$ 567	\$ 470	\$ 404	\$ 362	\$ 361	\$ 270	\$ 257	\$ 211	\$ 183	\$ 157	\$ 156	\$ 131	\$ 106	\$ 66	\$ 3
Jan 26	\$ 348	\$ 781	\$ 552	\$ 520	\$ 519	\$ 516	\$ 464	\$ 309	\$ 288	\$ 243	\$ 208	\$ 188	\$ 164	\$ 152	\$ 141	\$ 105	\$ 3
Feb 26	\$ 416	\$ 1,026	\$ 774	\$ 677	\$ 667	\$ 651	\$ 595	\$ 416	\$ 324	\$ 299	\$ 275	\$ 269	\$ 260	\$ 221	\$ 205	\$ 120	\$ 5
Mar 26	\$ 369	\$ 679	\$ 588	\$ 586	\$ 525	\$ 512	\$ 504	\$ 320	\$ 260	\$ 225	\$ 217	\$ 207	\$ 181	\$ 161	\$ 161	\$ 97	\$ 3
Apr 26	\$ 60	\$ 141	\$ 141	\$ 102	\$ 88	\$ 84	\$ 64	\$ 56	\$ 54	\$ 50	\$ 40	\$ 40	\$ 32	\$ 31	\$ 7	\$ 0	\$ 0
May 26	\$ 174	\$ 62	\$ 56	\$ 49	\$ 46	\$ 28	\$ 26	\$ 24	\$ 23	\$ 21	\$ 15	\$ 13	\$ 5	\$ 5	\$ 4	\$ 0	\$ 0
Jun 26	\$ 397	\$ 307	\$ 237	\$ 161	\$ 113	\$ 103	\$ 99	\$ 98	\$ 66	\$ 56	\$ 51	\$ 47	\$ 42	\$ 33	\$ 7	\$ 0	\$ 1
Jul 26	\$ 364	\$ 397	\$ 279	\$ 264	\$ 194	\$ 160	\$ 156	\$ 108	\$ 100	\$ 73	\$ 63	\$ 60	\$ 53	\$ 44	\$ 28	\$ 0	\$ 1
Aug 26	\$ 303	\$ 234	\$ 195	\$ 135	\$ 106	\$ 102	\$ 99	\$ 78	\$ 76	\$ 49	\$ 46	\$ 45	\$ 36	\$ 31	\$ 7	\$ 0	\$ 1
Sep 26	\$ 248	\$ 124	\$ 93	\$ 78	\$ 77	\$ 75	\$ 67	\$ 66	\$ 65	\$ 48	\$ 36	\$ 33	\$ 33	\$ 27	\$ 2	\$ 0	\$ 0
Grand Total	\$ 278	\$ 428	\$ 264	\$ 253	\$ 244	\$ 236	\$ 226	\$ 220	\$ 137	\$ 121	\$ 119	\$ 115	\$ 107	\$ 84	\$ 79	\$ 69	\$ 2
Historical Months Total	\$ 284	\$ 625	\$ 435	\$ 400	\$ 381	\$ 377	\$ 363	\$ 220	\$ 193	\$ 191	\$ 174	\$ 150	\$ 143	\$ 129	\$ 120	\$ 83	\$ 3
On the Books Total	\$ 273	\$ 222	\$ 154	\$ 122	\$ 96	\$ 87	\$ 85	\$ 81	\$ 66	\$ 57	\$ 48	\$ 40	\$ 39	\$ 30	\$ 19	\$ 0	\$ 1

Base Destination = Jackson Hole (All)

© 2025 Sterling Valley Systems, Inc. DBA Inntopia | Terms & Conditions



Jackson Hole (All)
% Change in RevPAR (Most Recent Data)
 Multi-Destination Comparative Report as of Mar 31, 2026

% Change in RevPAR as of Mar 31, 2026																	
Months Compared	Jackson Hole (All)																
		Highest Pacing	Next Strongest Pacing	Next Strongest Pacing	Next Strongest Pacing	Next Strongest Pacing	Next Strongest Pacing	Next Strongest Pacing	Next Strongest Pacing	Next Strongest Pacing	Next Strongest Pacing	Next Strongest Pacing	Next Strongest Pacing	Next Strongest Pacing	Next Strongest Pacing	Lowest Pacing	
Oct 25 vs. Oct 24	14.2%	576.8%	43.0%	16.2%	14.7%	14.0%	13.8%	11.7%	8.7%	3.5%	-1.9%	-9.3%	-12.5%	-22.4%	-23.9%	-36.5%	5.0
Nov 25 vs. Nov 24	1.7%	20.2%	12.9%	11.8%	8.4%	7.1%	5.1%	2.4%	0.9%	0.7%	-2.4%	-3.9%	-14.7%	-15.7%	-21.4%	-62.6%	-4.1
Dec 25 vs. Dec 24	20.4%	23.6%	19.0%	9.3%	1.2%	-0.2%	-2.2%	-3.2%	-3.2%	-5.2%	-6.7%	-8.5%	-8.9%	-10.2%	-17.1%	-22.1%	-0.1
Jan 26 vs. Jan 25	7.5%	34.0%	23.0%	6.1%	0.8%	-0.2%	-0.3%	-1.6%	-3.1%	-3.3%	-6.9%	-8.2%	-9.6%	-10.9%	-15.3%	-26.1%	-2.1
Feb 26 vs. Feb 25	-2.0%	16.6%	11.5%	11.2%	8.9%	8.8%	5.3%	-2.8%	-3.9%	-6.6%	-9.2%	-9.2%	-14.0%	-14.2%	-14.4%	-17.6%	-2.1
Mar 26 vs. Mar 25	6.4%	11.0%	-0.9%	-8.0%	-13.1%	-13.4%	-14.2%	-14.3%	-14.3%	-16.4%	-17.0%	-18.4%	-23.2%	-23.8%	-27.2%	-30.1%	-14.1
Apr 26 vs. Apr 25	1.1%	89.3%	36.8%	16.3%	0.0%	-3.8%	-4.9%	-5.9%	-9.6%	-21.6%	-22.3%	-22.6%	-32.2%	-34.5%	-38.9%	-42.3%	-16.1
May 26 vs. May 25	14.9%	129.9%	79.9%	61.8%	41.0%	22.3%	20.9%	5.8%	3.5%	0.0%	-0.0%	-4.1%	-10.1%	-14.9%	-21.5%	-44.5%	11.1
Jun 26 vs. Jun 25	16.2%	137.1%	26.7%	15.0%	14.7%	11.8%	4.8%	4.1%	0.0%	-1.2%	-1.8%	-2.4%	-3.8%	-14.8%	-15.1%	-17.0%	8.1
Jul 26 vs. Jul 25	12.9%	85.1%	27.4%	26.0%	21.4%	16.3%	12.9%	12.4%	10.0%	2.2%	0.2%	0.0%	-1.3%	-4.9%	-9.1%	-32.6%	13.1
Aug 26 vs. Aug 25	20.5%	40.5%	33.7%	33.3%	31.7%	25.0%	17.7%	15.3%	7.0%	0.0%	-0.2%	-4.1%	-9.3%	-9.8%	-10.9%	-16.5%	10.1
Sep 26 vs. Sep 25	8.7%	38.9%	31.6%	24.8%	23.1%	19.8%	17.8%	14.7%	13.5%	10.4%	9.4%	4.3%	0.0%	-5.6%	-13.2%	-34.5%	12.1
Grand Total	10.6%	18.4%	9.6%	0.9%	0.3%	0.2%	-0.4%	-2.8%	-5.8%	-6.8%	-7.9%	-9.0%	-10.5%	-10.6%	-11.2%	-22.1%	-1.1
Historical Months																	